



PRODUCT/ MANUAL VALVE

T3BV Series Manual Ball Valve

iso5211 Mounting pad



Specifications Characteristics

Model	T3BV Series
Medium Temp.	-20°C - 150°C (200°C)
ENV Temp.	Temp. -10 - 55°C ; Humidity. 10 - 90% RH
Pressure	0 - 1.5 Mpa
Valve body Mat.	Stainless steel 316
Bonnet Material	Stainless steel 316
Gasket Material	PTFE
Stem Material	Stainless steel 316
Seat Material	PTFE
Handle Material	SUS304+Plastic

How to select model

T3BV - 80 P

Model Valve body spec. Thread

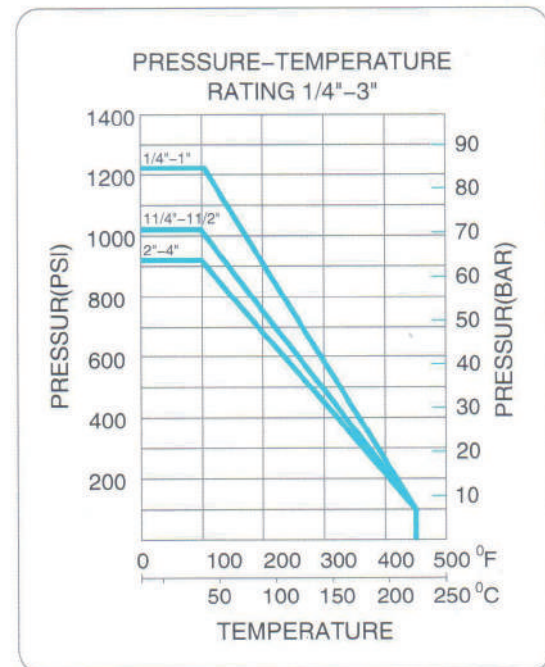
Thread	Diameter	DN	Code
	1/4"	8	08
	3/8"	10	10
	1/2"	15	15
	3/4"	20	20
	1"	25	25
	1-1/4"	32	32
	1-1/2"	40	40
	2"	50	50
	2-1/2"	65	65
3"	80	80	
4"	100	100	

Spec.	Code
PT	P
NPT	N

Other parts

Spec.	Code
TFM4215	X

Pressure - temperature Rating



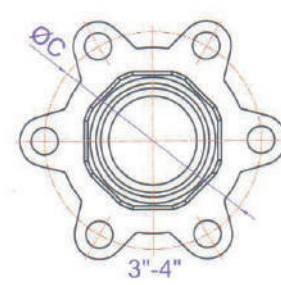
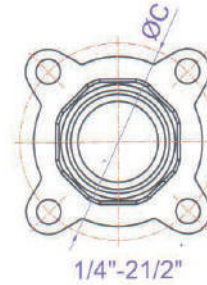
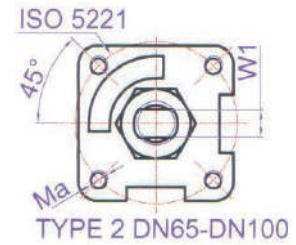
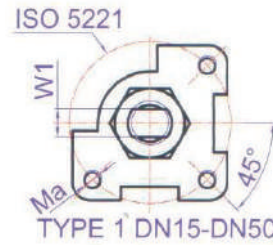
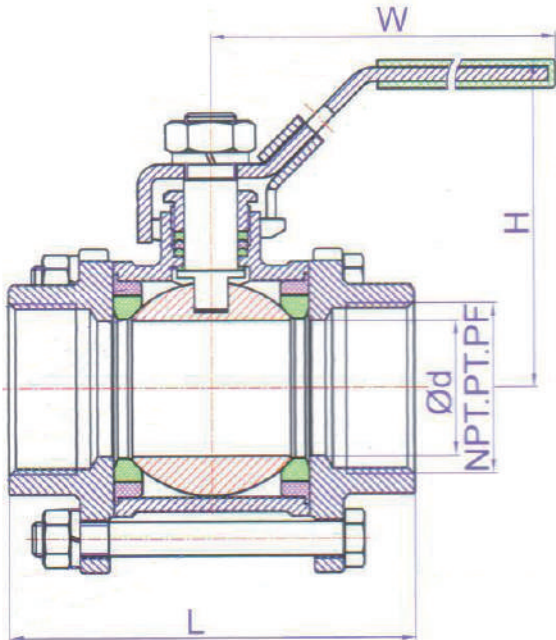


TXMC



PRODUCT/ MANUAL VALVE

Dimensions



Unit : mm

Size	d	L	H	W	C	S	ISO 5211	H1	W1	Ma	CV Factor	Torque (N.M)
1/4"	11.6	58	56	102	40.5	14.1	F03	15	5.0	M5	6.0	4.2
3/8"	12.7	58	56	102	40.5	17.6	F03	15	5.0	M5	7.0	4.2
1/2"	15	63	65	123	47	21.7	F03	16	6.5	M5	10	7.0
3/4"	20	73	67	123	53.5	27.1	F03	16	6.5	M5	25	9.0
1"	25	85	79	153	59.6	33.8	F04	21	8.0	M5	35	12.4
1-1/4"	32	96	84	153	74.2	42.6	F04	21	8.0	M5	46	15
1-1/2"	38	114	92	183	84	48.7	F05	25	9.5	M6	80	20
2"	50	134	99	183	101	61.1	F05	29	9.5	M6	110	30
2-1/2"	65	180	136	246	132	76.9	F07	40	12.0	M8	310	42
3"	80	200	146	246	161.5	89.8	F07	48	12.0	M8	360	65
4"	100	228	168	503	191	115.5	F07	33	12.0	M8	820	100

